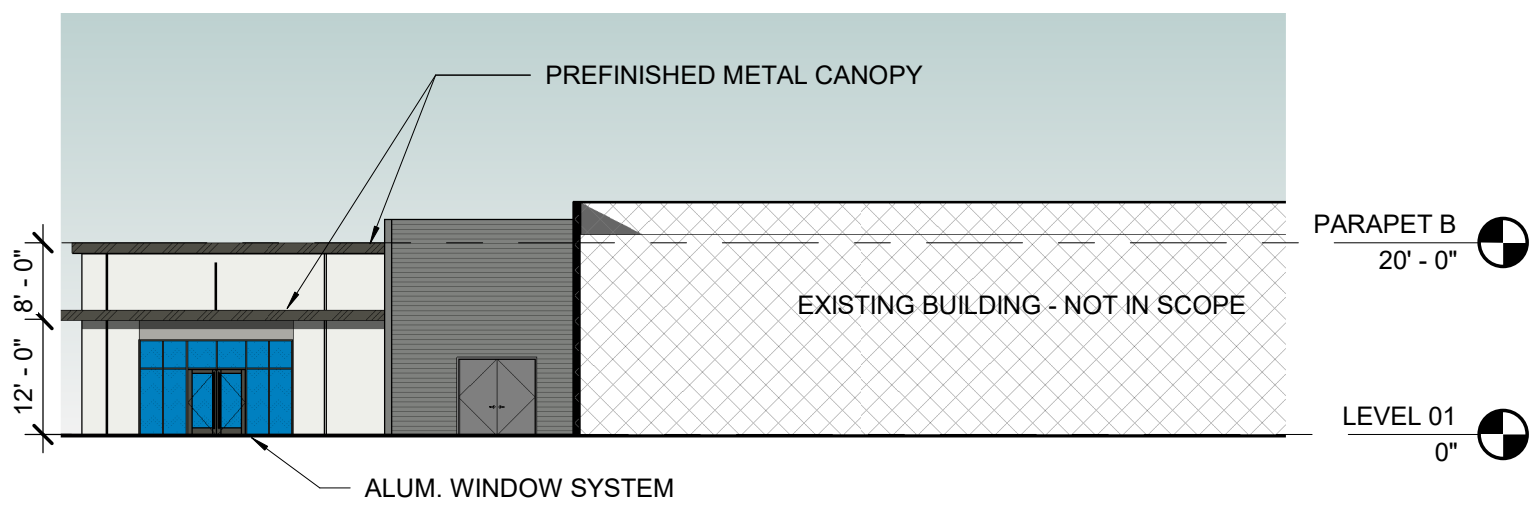
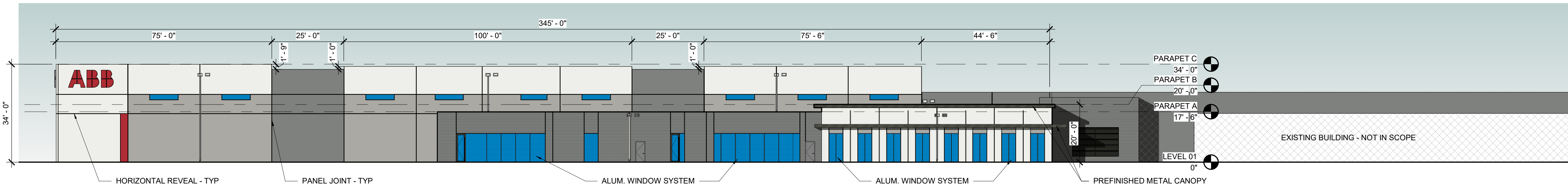


THIS DOCUMENT, TOGETHER WITH THE CONCEPTS AND DESIGN PRESENTED HEREIN, IS AN INSTRUMENT OF SERVICE. IT IS TO BE USED ONLY FOR THE SPECIFIC PROJECT AND CLIENT FOR WHICH IT WAS PREPARED. REUSE OF ANY PORTION OF THIS DOCUMENT WITHOUT THE WRITTEN AUTHORIZATION AND APPROVAL BY POWERS BROWN ARCHITECTURE, INC. SHALL BE WITHOUT LIABILITY TO POWERS BROWN ARCHITECTURE, INC.



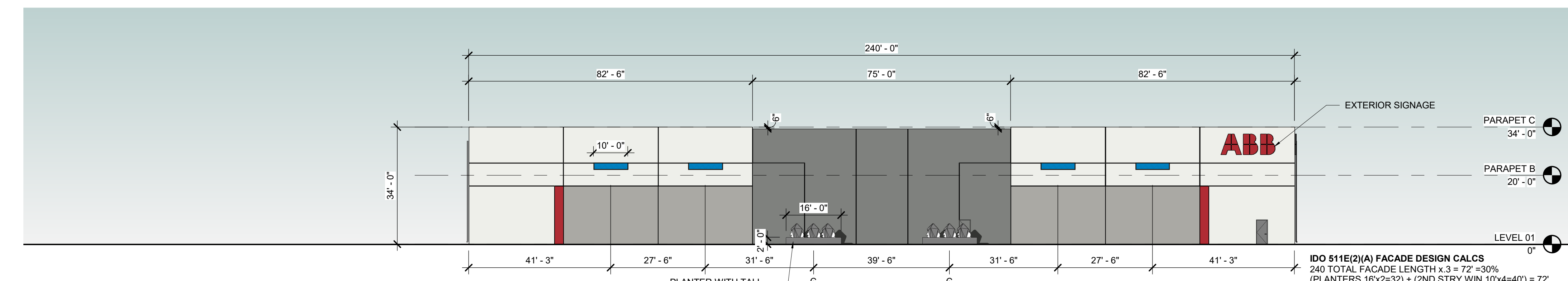
OVERALL ELEVATION - NORTH - SDP

SCALE: 1" = 20'-0"



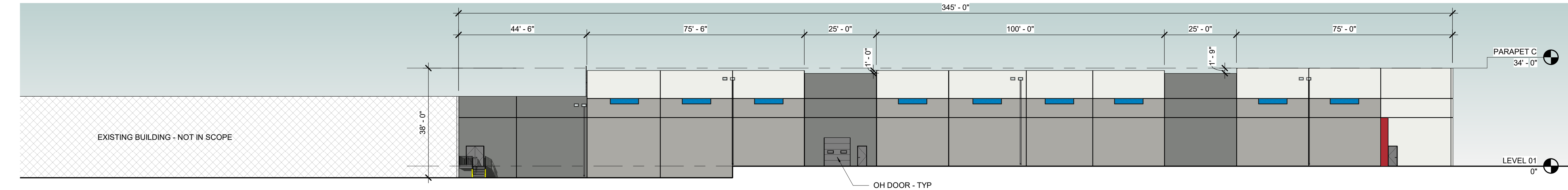
OVERALL ELEVATION - EAST - SDP

SCALE: 1" = 20'-0"



OVERALL ELEVATION - SOUTH - SDP

SCALE: 1" = 20'-0"



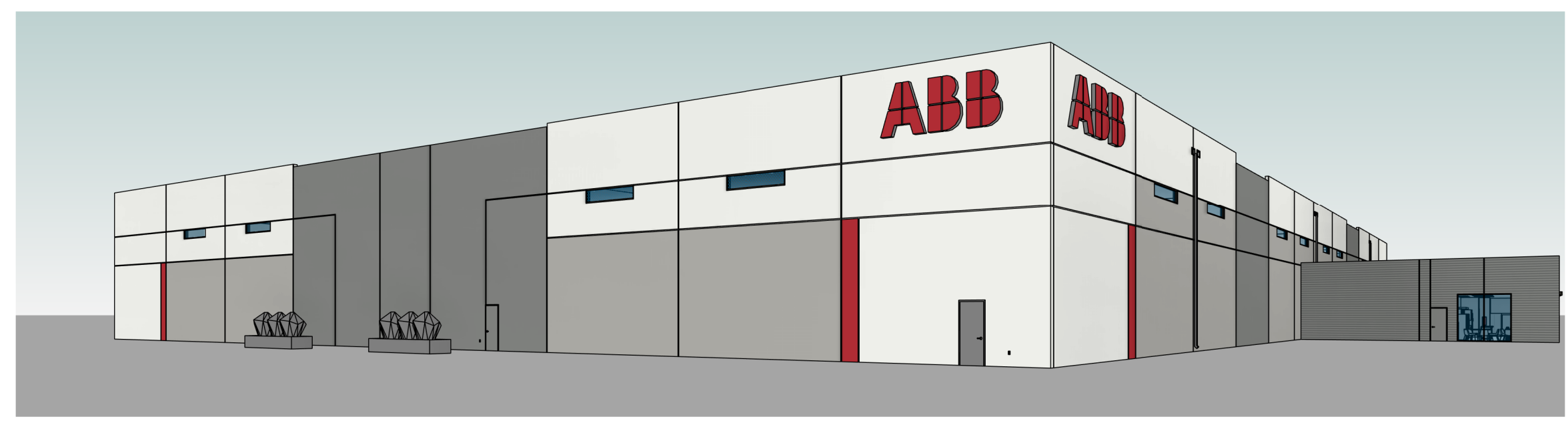
OVERALL ELEVATION - WEST - SDP

SCALE: 1" = 20'-0"



3D VIEW @ NE CORNER

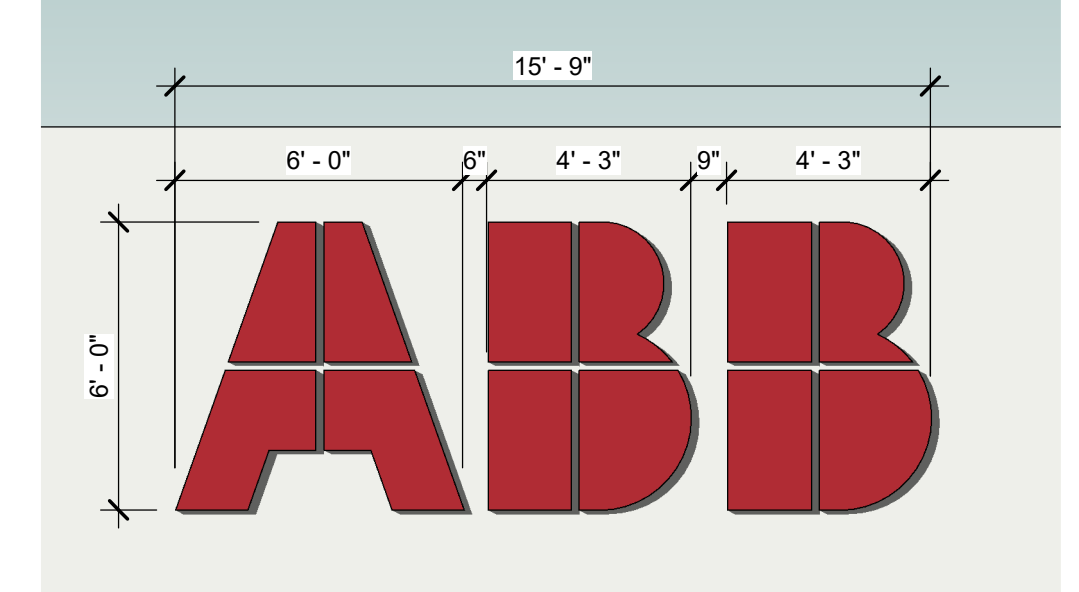
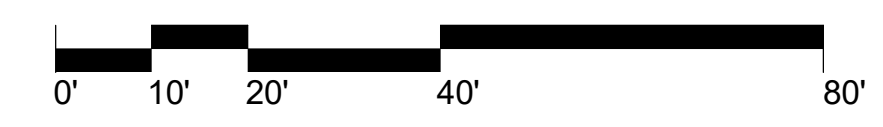
SCALE:



3D VIEW @ SE CORNER

SCALE:

- FIELD PAINT - EXTRA WHITE SW 70006
- ACCENT PAINT 1 - ELLIE GRAY SW7650
- ACCENT PAINT 2 - CITYSCAPE SW7067
- ACCENT PAINT 3 - POSITIVE RED 6871
- ACCENT PAINT 2 WITH FORMLINER
- VISION GLAZING
- PREFINISHED METAL CANOPY/STOREFRONT - DARK BRONZE



SIGN NOTES:
 SIGN AREA: 66 SF
 TYPE: INTERIOR ILLUMINATED WALL MOUNTED BUILDING SIGN
 MATERIALS: TRANSLUCENT ACRYLIC LENS WITH EXTRUDED ALUMINUM BACKING/MOUNTING PLATE

EXTERIOR SIGNAGE - ABB LOGO

SCALE: 1/4" = 1'-0"

IDO 511E(2)(A) FACADE DESIGN CALCS
 240 TOTAL FACADE LENGTH x .3 = 72' = 30%
 (PLANTERS 16'x2=32) + (2ND STRY WIN 10'x4=40) = 72'

NO.	REVISION	BY	DATE	APPR.

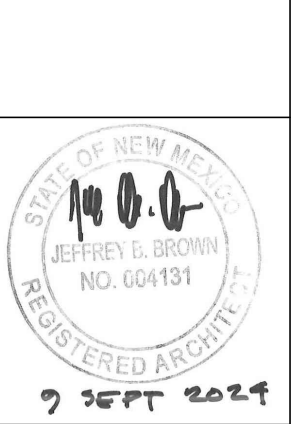
2150 W 29th Ave,
 Suite 400
 Denver, Colorado 80211
 303.225.3345
 www.powersbrown.com

**POWERS
 brown
 archit
 ecture**

DESIGNED BY: MF
 DRAWN BY: MF
 CHECKED BY: KS
 DATE: 01/05/2023

LEGAL DESCRIPTION:
 TRACT A, ATRISCO
 BUSINESS PARK, UNIT 1
 CONTAINING 39.775 ACRES

ABB ABQ ADDITION
 6625 BLUEWATER ROAD NW
 SITE PLAN - DFT
 BUILDING ELEVATIONS



PROJECT NO. 096523009

SHEET A1.0